



VERMEJO

COSTILLA FISHING LODGE

Costilla Fishing Lodge is a wonderfully secluded getaway, located 45 minutes from the Main Lodge. Tucked away in high country at 10,000 feet in elevation, Costilla Fishing Lodge offers direct access to untamed wilderness and fishing lakes. Breathe in the crisp alpine air and soak in the stunning views of the Sangre de Cristo mountain range as you cast for Rio Grande cutthroat trout.

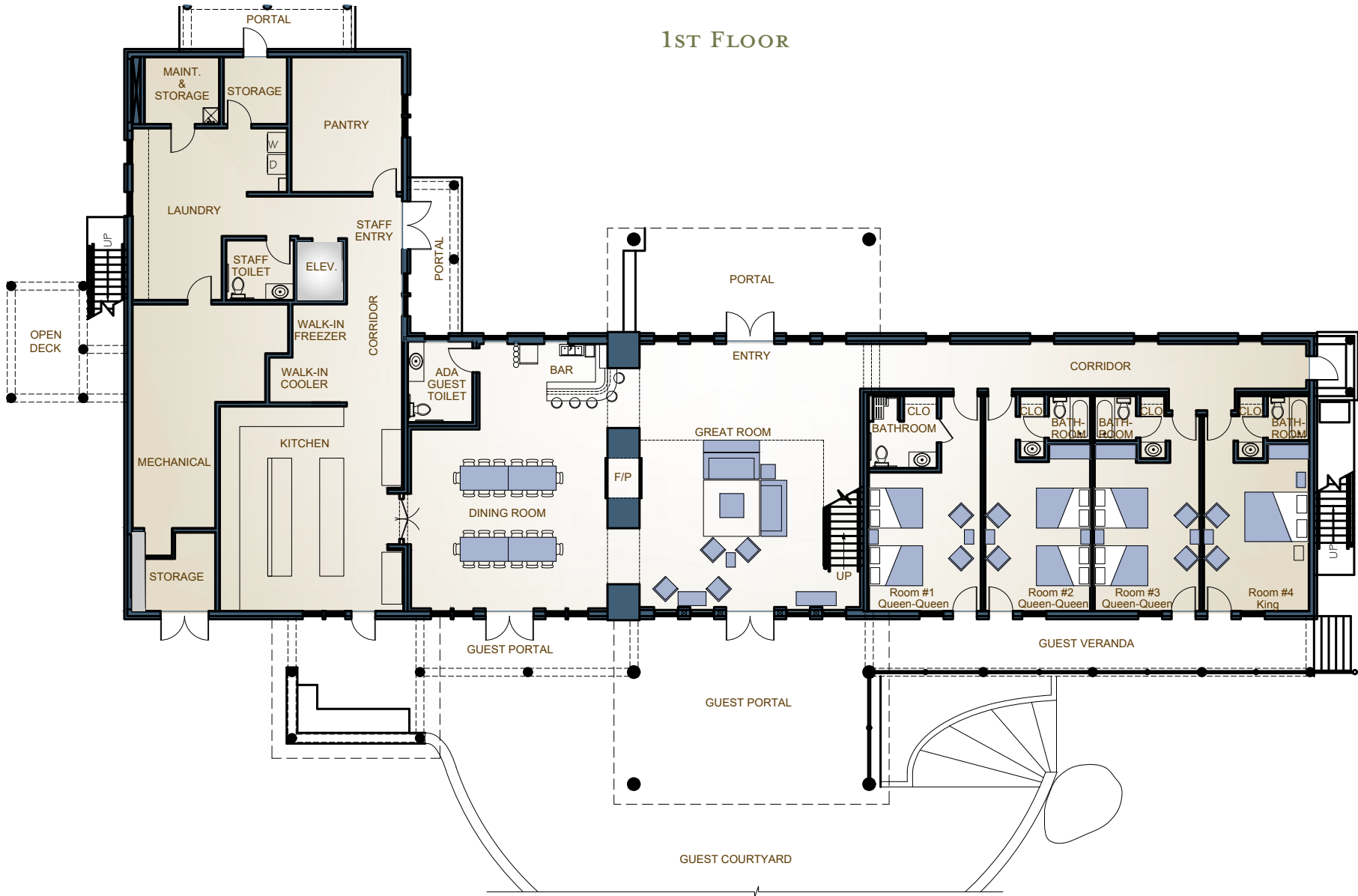
Constructed using the property's own timber and stone, this solar-powered eco-friendly lodge is certified LEED Silver. Enjoy incredible views from the expansive porch, relax in front of the grand stone fireplace, and enjoy meals from a dedicated chef. Costilla Fishing Lodge is available to book per room, or as a full buyout.



GUEST ROOMS	BEDS	BEDS	SQ. FT.
8	14	2K, 12Q	25,000

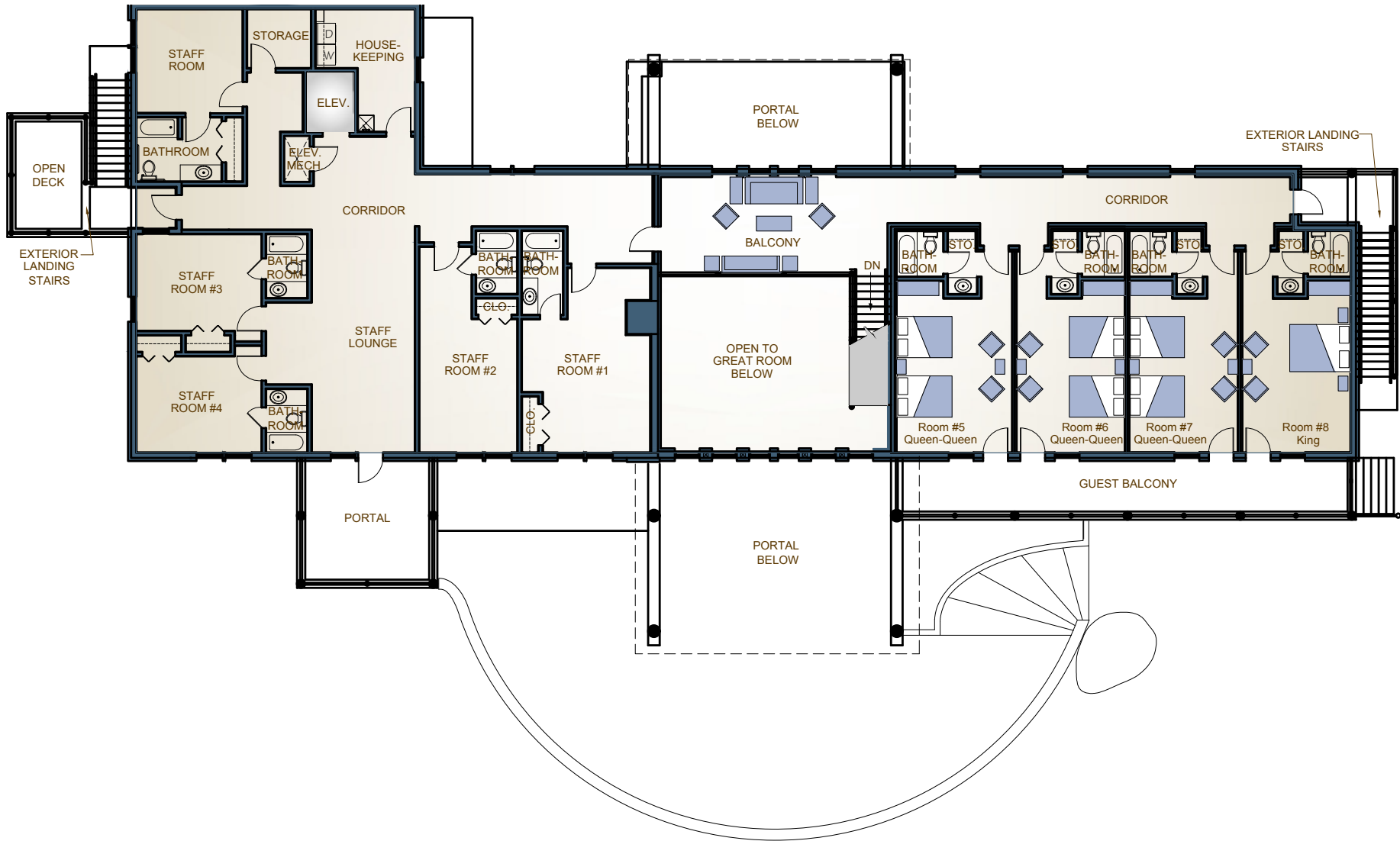
COSTILLA FISHING LODGE

1ST FLOOR



COSTILLA FISHING LODGE

2ND FLOOR





VERMEJO

CASA GRANDE

Take a step back in time and experience turn-of-the-century luxury. Once Ted Turner's private quarters, Casa Grande, a renovated 25,000-square-foot stone mansion, blends Southwestern accents with 1900s grandeur. As you navigate through the marble column hallways, you'll feel transported to an elegant 1920s soirée. This historic home boasts a billiards room, renovated chef's kitchen, and conservatory.



GUEST ROOMS	BEDS	BEDS	SQ. FT.
7	8	6Q, 2T	25,000



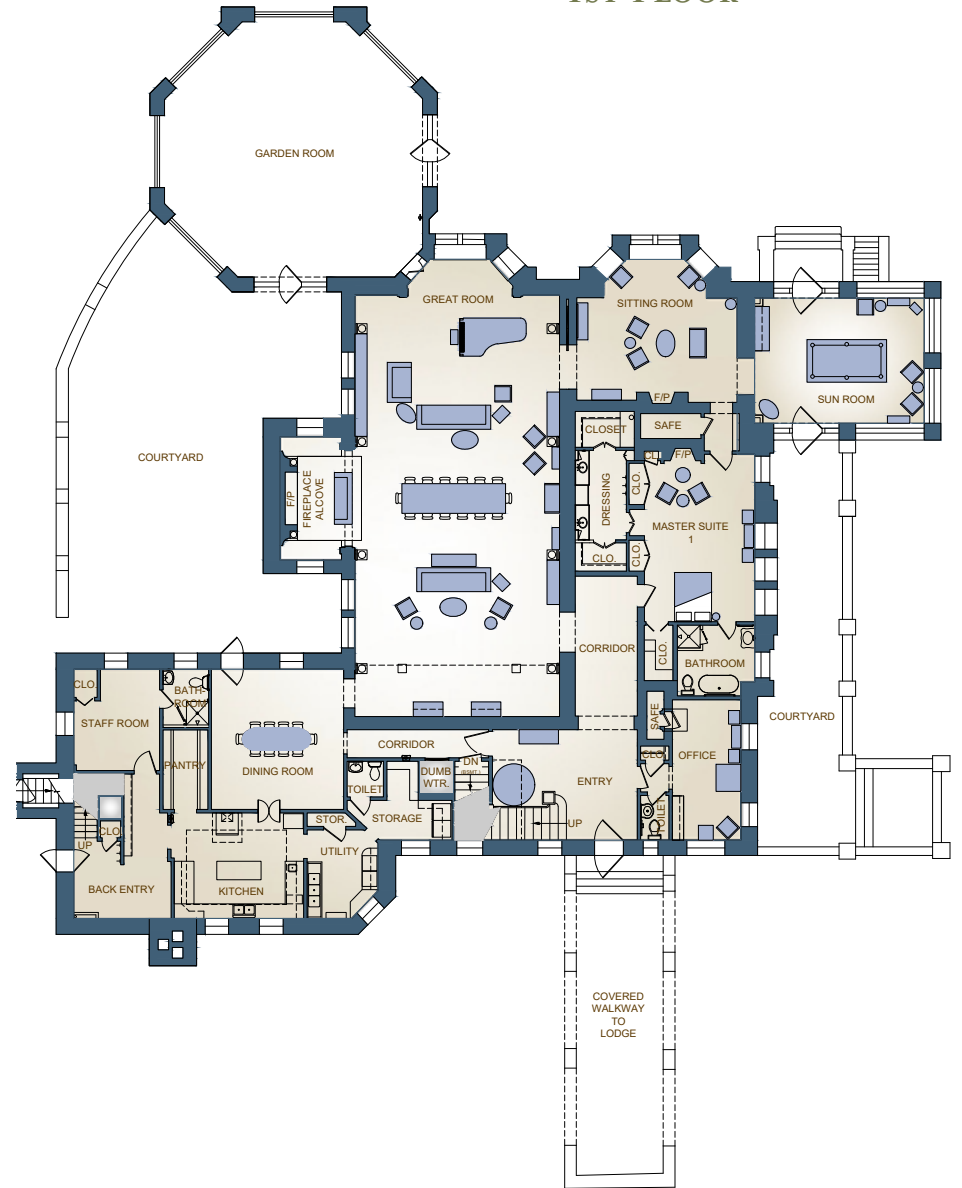


VERMEJO

CASA GRANDE



1ST FLOOR

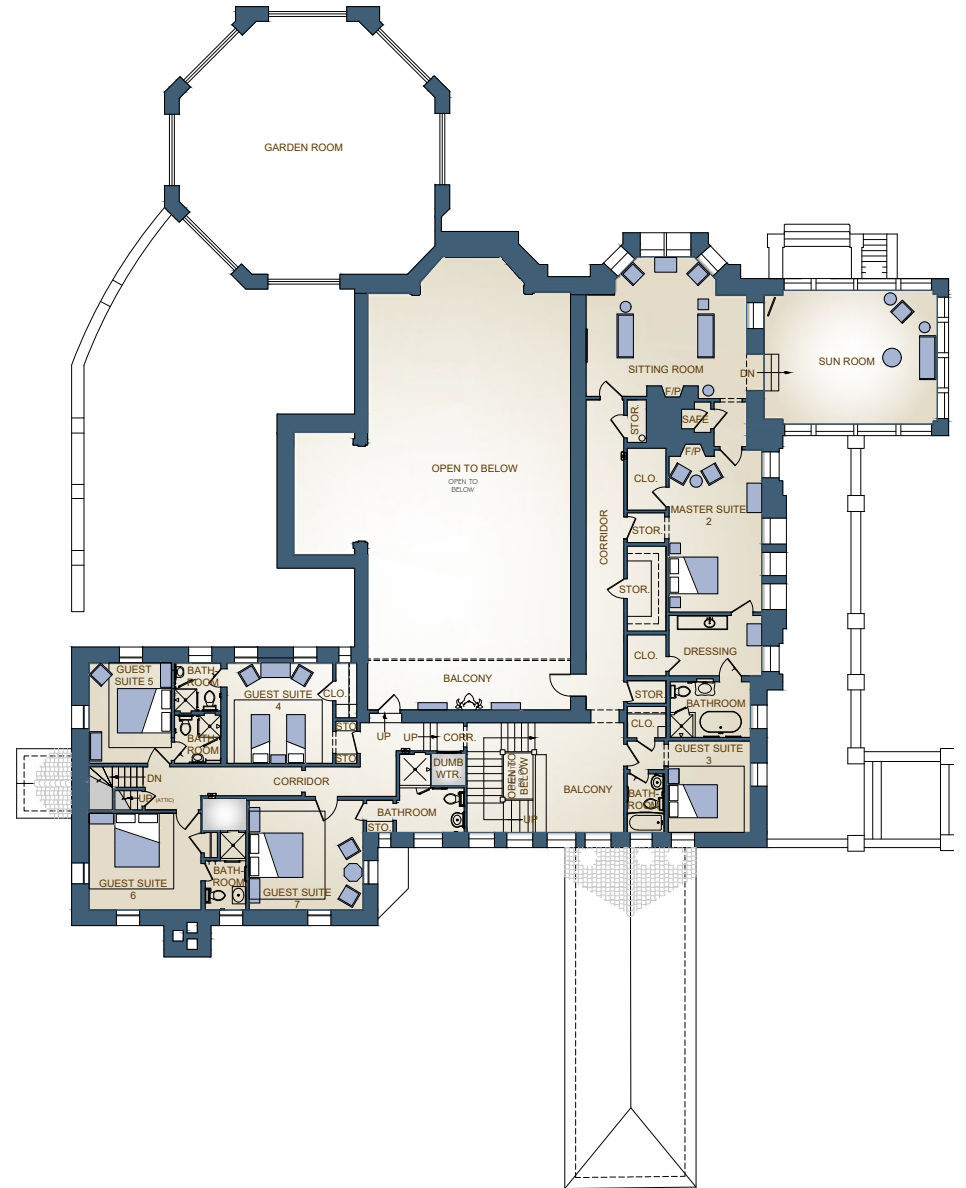




VERMEJO

CASA GRANDE

2ND FLOOR





VERMEJO

TURNER HOUSE

In honor of our illustrious founder, Ted Turner, the newly renovated Turner House exudes old-world grandeur with elegant interiors. It features 10 guest rooms, 3 comfortable gathering spaces, 8 gas fireplaces, two wet bars, and the Vermejo Spa with a new garden entry-way featuring a natural stone fountain. The gas firepit and rock seating area in front is the perfect place to while away the evening with family or friends.



GUEST ROOMS	BATHROOMS	BEDS	SQ. FT.
10	10	8K, 2Q, 4T	12,772

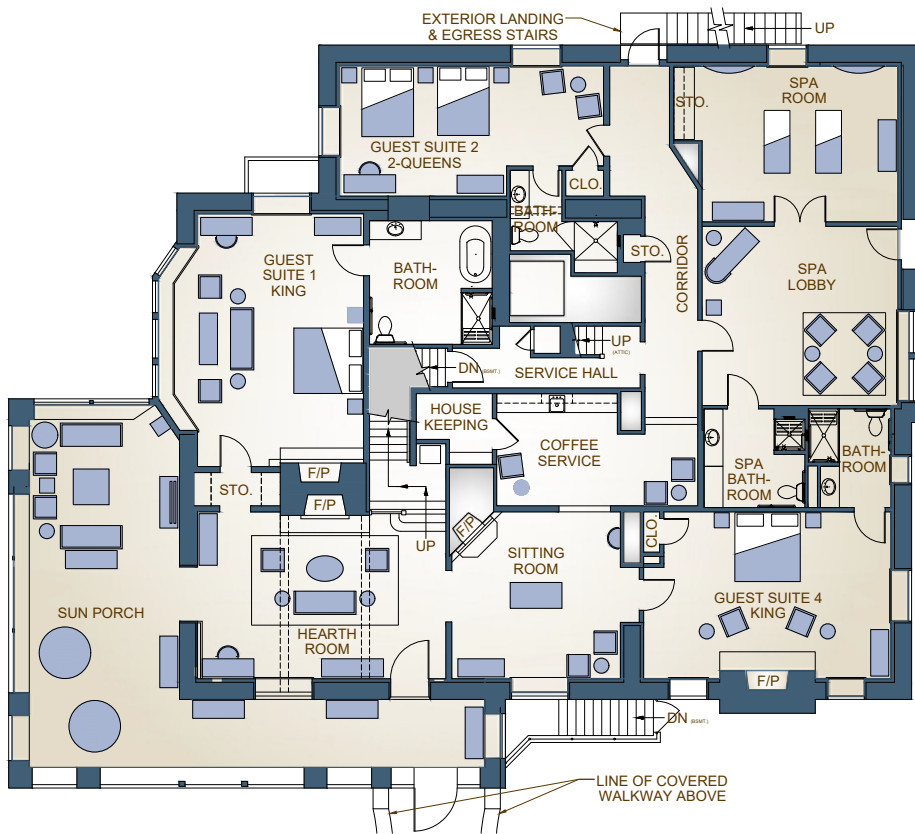




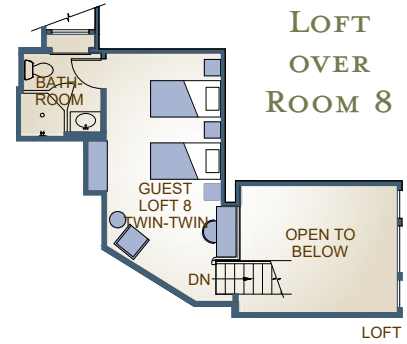
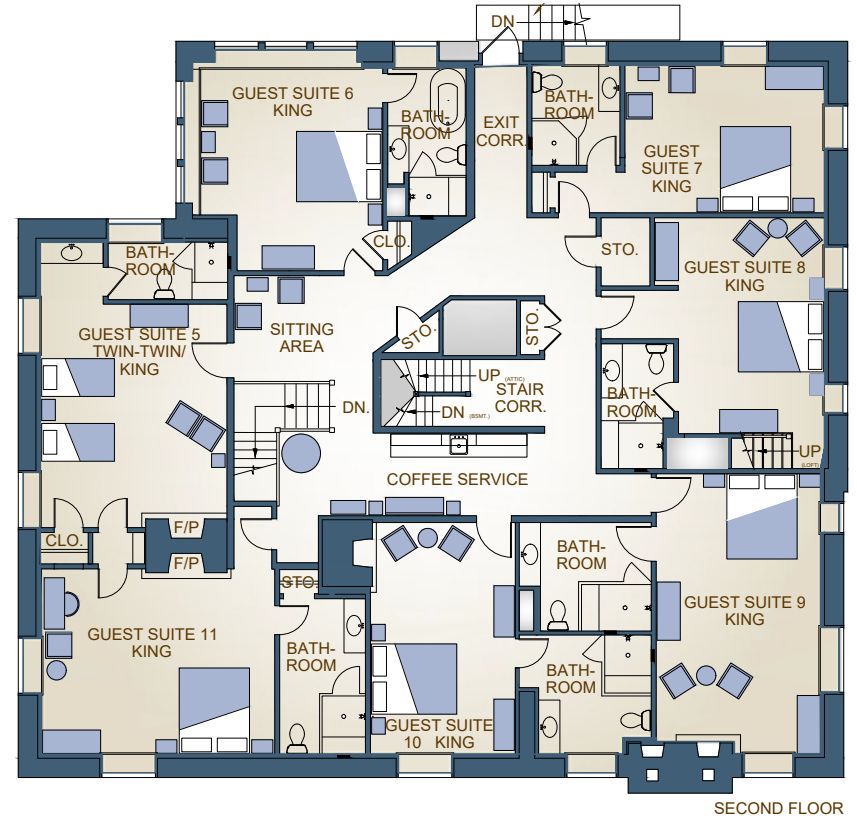
VERMEJO

TURNER HOUSE

1ST FLOOR



2ND FLOOR



LOFT



BARTLETT PREMIUM COTTAGE

Named for William Bartlett, Vermejo's first builder, and styled to emulate Casa Grande's elegance, the two-story five-bedroom Bartlett Cottage is an ideal option for an intimate gathering of friends or family. A wet-bar, coffee station, and mini-fridge are paired with a comfortable living room and fireplace. With four King Suites and one Double-Queen Suite, Bartlett's spacious bedrooms and bathrooms add to the luxury of this lavishly furnished home.



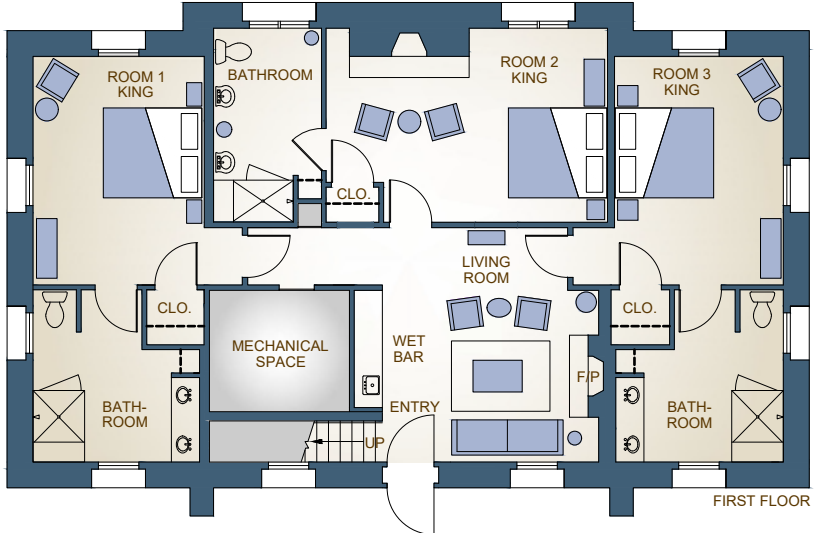
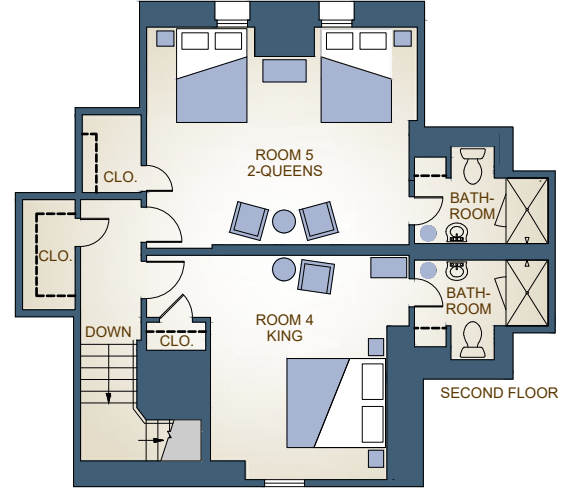
GUEST ROOMS	BATHROOMS	BEDS	SQ. FT.
5	5	4K, 2Q	2,201





VERMEJO

BARTLETT PREMIUM COTTAGE





CHANDLER PREMIUM COTTAGE

Named after famed Los Angeles Times publisher Harry Chandler, founder of the illustrious Vermejo club whose membership once included Herbert Hoover and Cecil B. DeMille, the recently remodeled two-story four-bedroom cottage is a charming example of Southwestern grace. It features a King Suite and a Single Queen Suite downstairs, alongside a welcoming living room and wet bar. Upstairs, it has two Single Queen rooms with private baths.



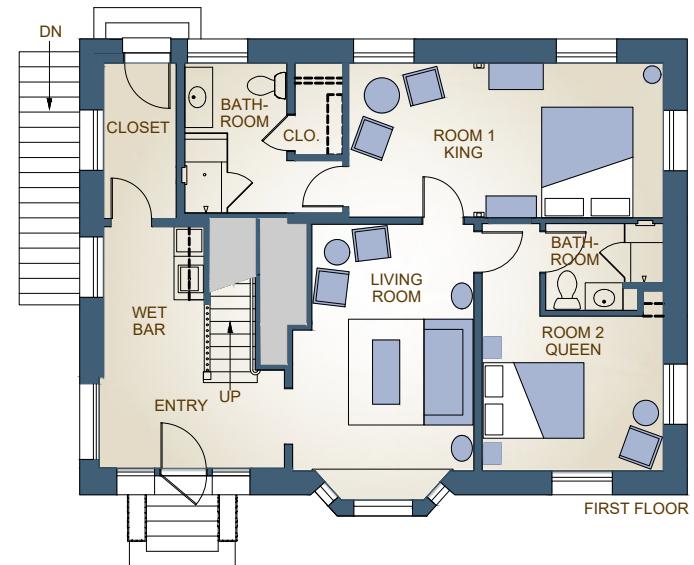
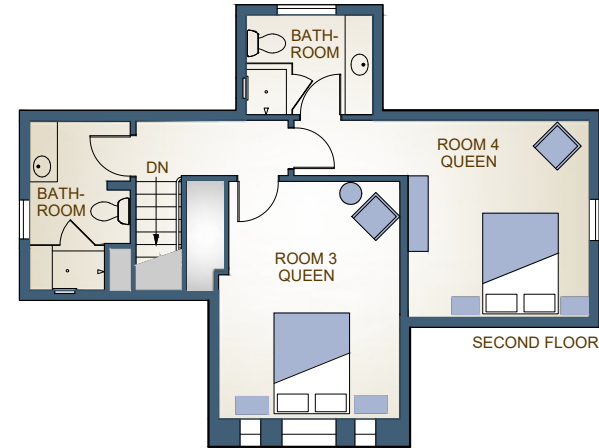
GUEST ROOMS	BATHROOMS	BEDS	SQ. FT.
4	4	1K, 3Q	1,823





VERMEJO

CHANDLER PREMIUM COTTAGE



CHANDLER COTTAGE
FIRST & SECOND FLOORS

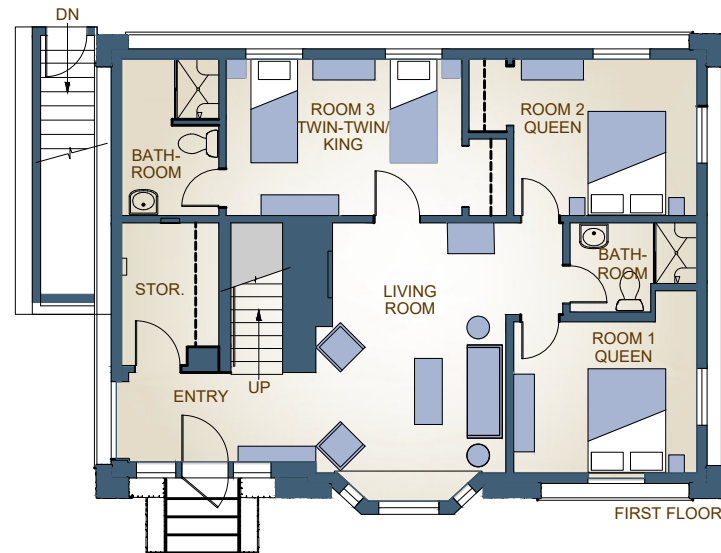
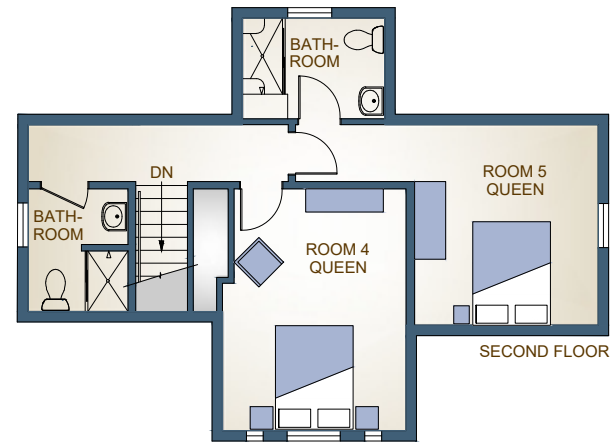
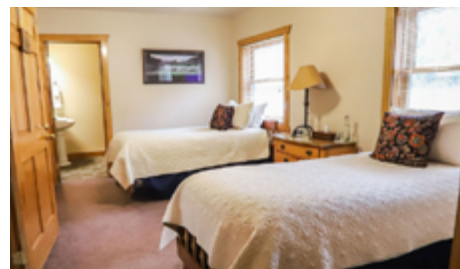


VERMEJO

GOURLEY COTTAGE

Sitting in dignified solitude on a well-manicured lawn, Gourley Cottage is comprised of four queen bedrooms and one room with two twins

GUEST ROOMS	BATHROOMS	BEDS	SQ. FT.
5	4	4Q, 2T	1,823



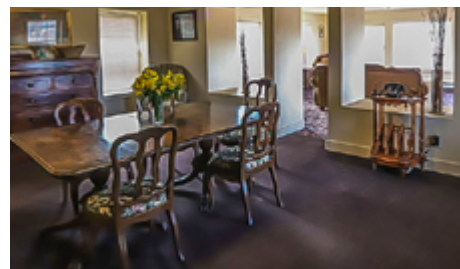
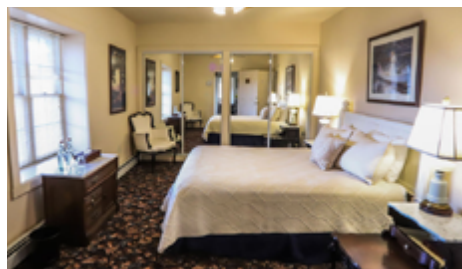
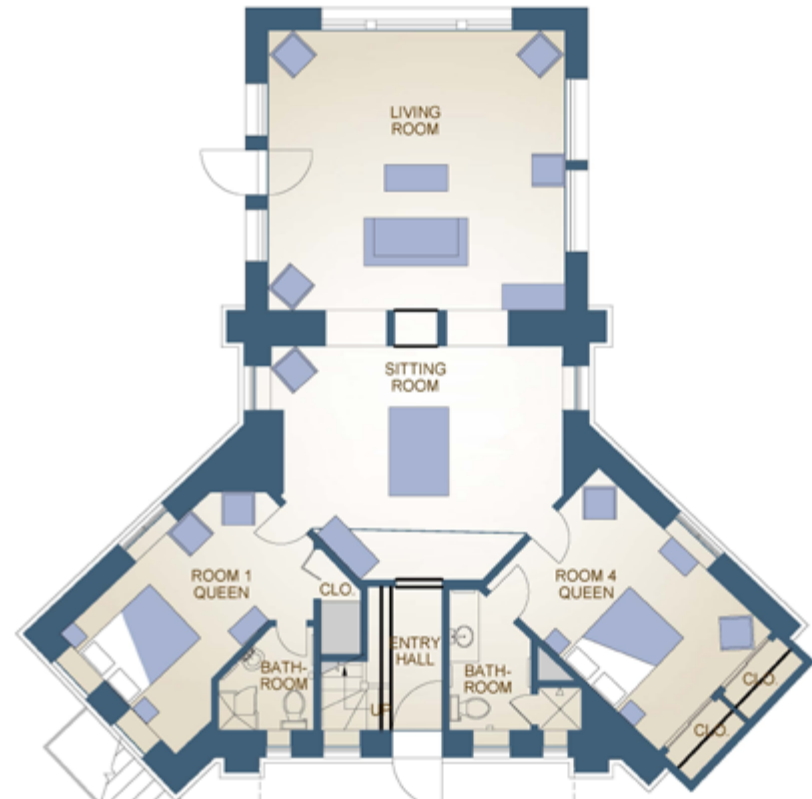
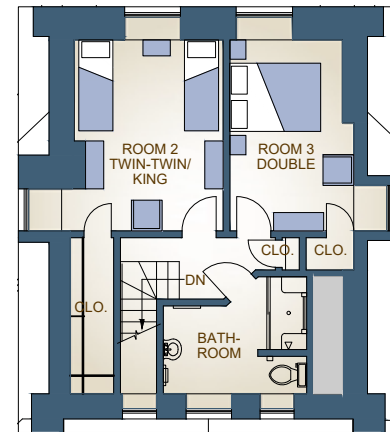


VERMEJO

PENNZOIL COTTAGE

The scenic four-bedroom cottage has spectacular views of the Vermejo Valley. Set back from the main lodge, Pennzoil was the historic home of the property's physician.

GUEST ROOMS	BATHROOMS	BEDS	SQ. FT.
4	3	2Q, 1D, 2T	1,723

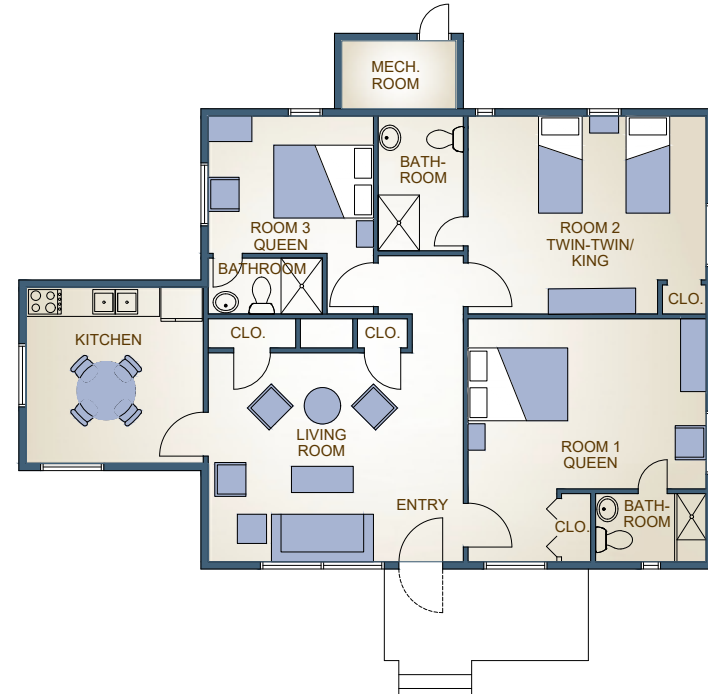




MAXWELL COTTAGE

The quaint three-bedroom Maxwell Cottage includes a large side yard with expansive views of the property. A comfortable common living area and convenient kitchenette.

GUEST ROOMS	BATHROOMS	BEDS	SQ. FT.
3	3	2Q, 2T	1,054



HEADQUARTERS MAP



VERMEJO
A TED TURNER RESERVE

MAXWELL
COTTAGE

BARTLETT
COTTAGE

GOURLEY
COTTAGE

CHANDLER
COTTAGE

TURNER
HOUSE

CASA GRANDE

MAIN LODGE

PENNZOIL
COTTAGE

